

## G6 Series

### Miniature Micro Switch

#### ■ Features

- ◆ Small compact size
- ◆ Global safety approvals
- ◆ Long life and high reliability
- ◆ Terminal load to 10(2)A, 1/4HP
- ◆ Variety of actuator and terminals
- ◆ Customized designs
- ◆ Widely used in auto control, appliance control, industrial control etc.

#### ■ Application

- |                        |                                   |
|------------------------|-----------------------------------|
| ◆ Phone                | ◆ Pump                            |
| ◆ Air-Conditioner      | ◆ Gas Detector                    |
| ◆ Computer             | ◆ Pencil Sharpener                |
| ◆ Humidifier           | ◆ Money Sorter                    |
| ◆ Alarm                | ◆ Food Processor                  |
| ◆ Timer                | ◆ Electric Knife                  |
| ◆ Mixer & Meat Grinder | ◆ Toy Car                         |
| ◆ Welding Machine      | ◆ Juice Extractor                 |
| ◆ Neon Phone           | ◆ Lighting Equipment              |
| ◆ Fax Machine          | ◆ Electric Frying Pan             |
| ◆ Game Controller      | ◆ Linear Actuator & Tubular Motor |

#### ■ Parameters

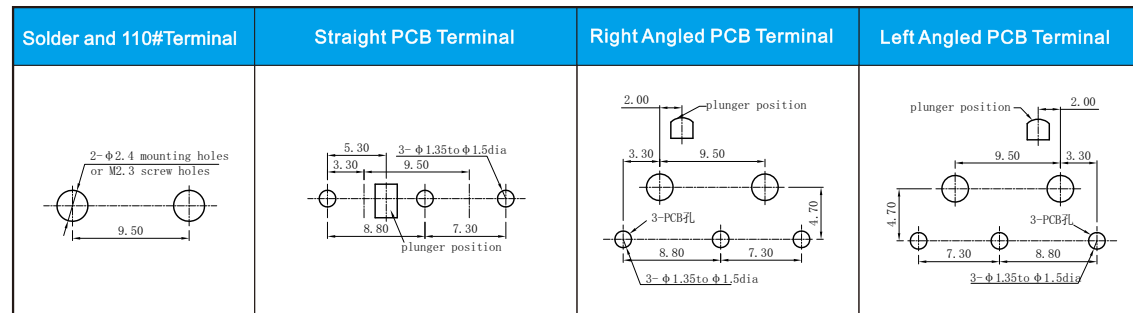
Rating	P1	ENEC/CQC: 0.1A 125/250VAC 0.1A 48VDC 5E4 25T125 UL: 0.1A 125/250VAC 0.1A 48VDC Gold Plated Contact Optional
	05	ENEC/CQC: 5(3)A 125/250VAC 5A 125/250VAC 5A 30VDC 25T120 μ 5E4 UL: 5A 125/250VAC 1/8HP 125/250VAC 5A 30VDC
	051/052	ENEC/CQC: 5A 125/250VAC 25T120 μ 5E4 UL: 5A 125/250VAC 1/8HP 125/250VAC
	10/101	ENEC/CQC: 10(2)A 125/250VAC 25T120 μ 5E4 UL: 10.1A 125/250VAC 1/4HP 125/250VAC 10A 30VDC Note: Only with "OF" over "250gf"
	12	ENEC/CQC: 12(6)A 125/250VAC 40T125 μ 1E4 UL: 12A 125/250VAC Note: Only with 350gf OF
Operating Frequency	Electrical	10~30 cycles/min
	Mechanical	120 cycles/min
Contact Resistance (Initiative)		100mΩ Max.
Insulation Resistance (at 500VDC)		100MΩ Min.
Dielectric Strength	Between Terminals	1,000VAC 50~60Hz for 1 Min.
	Between Terminals and Housing	1,500VAC 50~60Hz for 1 Min.
Operating Temperature		-25°C~ +125°C
Operating Humidity		85%RH Max.
Service Life	Electrical	10,000~50,000 cycles (Depend on P/N)
	Mechanical	1,000,000 cycles



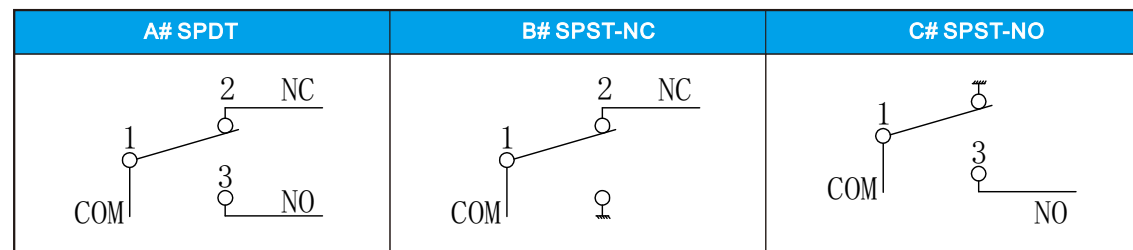
## G6 Series Micro Switch Ordering Instruction

G6	05	150	S	00	A	A	T001	U
Switch Type	Electrical Rating	Max. Operating Force at Pin Plunger	Terminal Style	Lever Type	Circuitry	Special Designator	Custom Code	LOGO
G6series micro switch	P1	ENEC/CQC: 0.1A 125/250VAC 0.1A 48VDC 5E4 25T125 UL: 0.1A 125/250VAC 0.1A 48VDC Gold plated contact optional	S Solder Terminals	00 NoLever Pin Plunger	A SPDT	General	General	U Unionwell
	05	ENEC/CQC: 5(3)A 125/250VAC 5A 125/250VAC 5A 30VDC 25T120 μ 5E4 UL: 5A 125/250VAC 1/8HP 125/250VAC 5A 30VDC	P Straight PCB Terminals	01 Short Straight Lever 0.66"	B SPST-NC	A Gold Plated Contacts (Optional, only for G6P1)	Customized according to requirements, the code format is T+ serial number XXX, for example: T001	... Other
	10	ENEC/CQC: 10(2)A 125/250VAC 1E4 25T125 UL: 10.1A 125/250VAC 1/4HP 125/250VAC 10A 30VDC Note: Switch "10" rating is only available with OF over "250gf"	R Right Side PCB Terminals	02 18.70mm Std. Straight Lever 0.74"	C SPST-NO	D High DC Rating Special use		
	12	ENEC/CQC: 12(6)A 125/250VAC, 1E4 40T125 UL: 12A 125/250VAC OF only with 250gf	L Left Side PCB Terminals	03 24.80mm Long Straight Lever 0.98"		... Other		
	051	ENEC/CQC: 5A 125/250VAC 5E4 25T125 UL: 5A 125/250VAC 1/8HP 125/250VAC Spring plate type	D 110# 2.80 x0.6mm Quick Connect Terminals 0.11"x0.023"	04 35.10mm Longer Straight Lever 1.39"				
	101	ENEC/CQC: 10(2)A 125/250VAC 1E4 25T125 UL: 10.1A 125/250VAC 1/4HP 125/250VAC 10A 30VDC Note: Switch with "10" rating are only available with "150" OF spring plate type	F Special OF	E 110# 2.80 x0.5mm Quick Connect Terminals 0.11"x0.023"	05 18.00mm Std. Simulated Roller Lever 0.71"			
	052	ENEC/CQC: 5A 125/250VAC 5E4 25T125 UL: 5A 125/250VAC 1/8HP 125/250VAC Bakelite housing spring plate type	... Special Terminals	06 16.60mm Copper Roller Lever				
					07 17.90mm Small Simulated Roller Lever 0.71"			
					08 16.50mm Plastic Roller Lever			
					... Other			

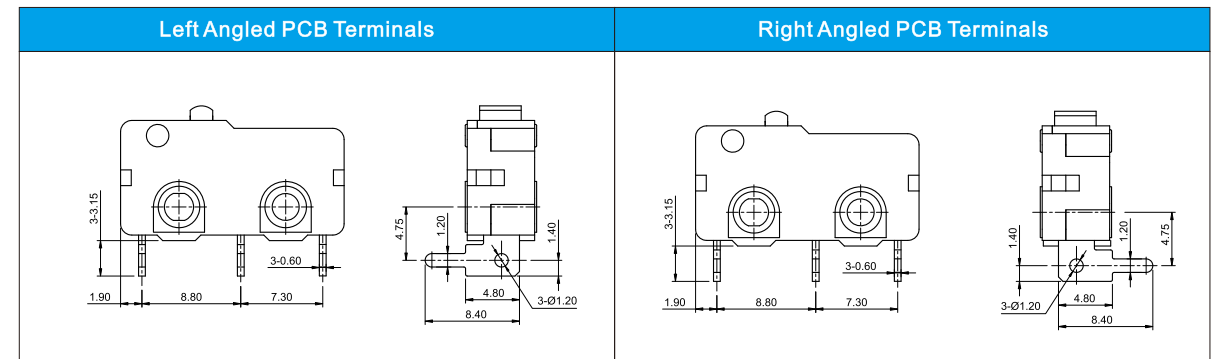
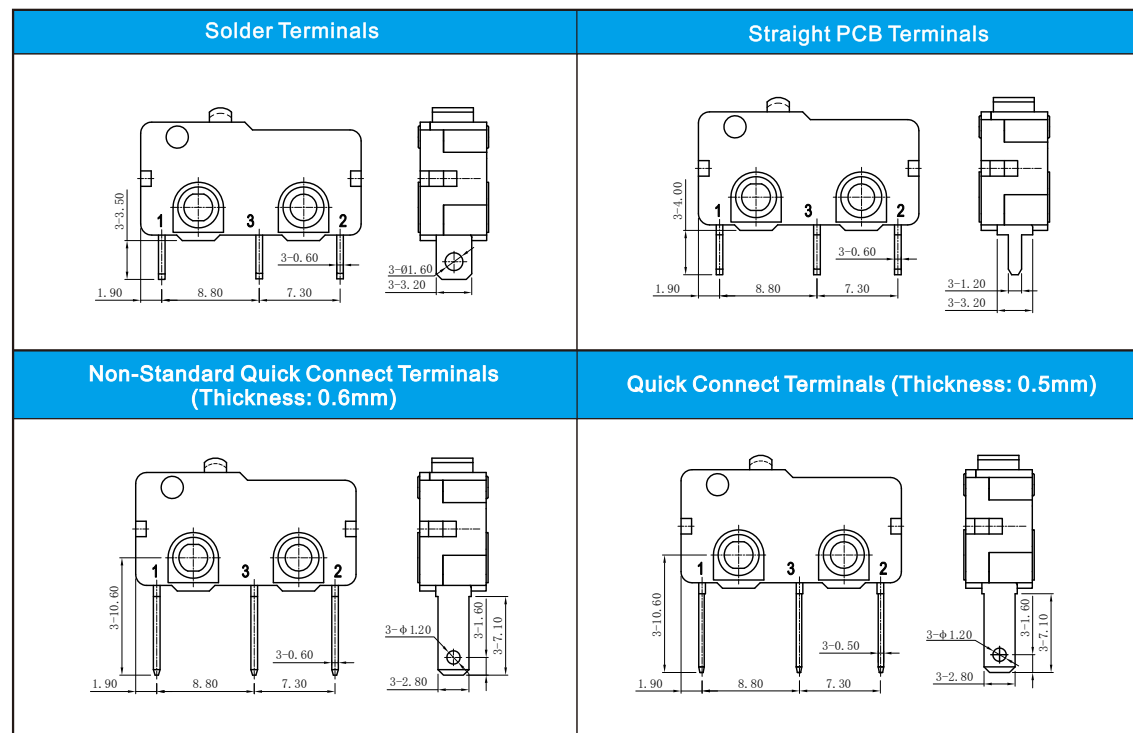
## ■ Mounting Hole Dimensions



## ■ Circuit Configuration

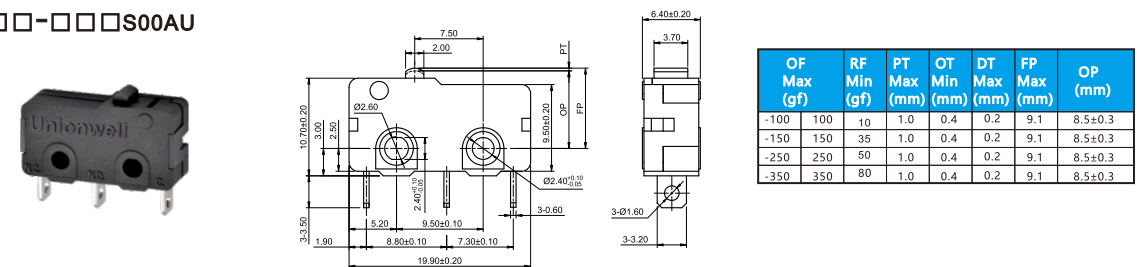


## ■ Terminal Dimensions

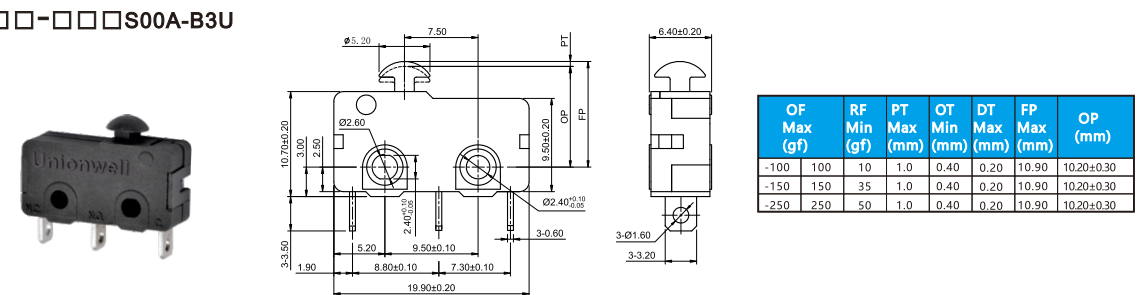


## ■ Dimensions and Operating Characteristics

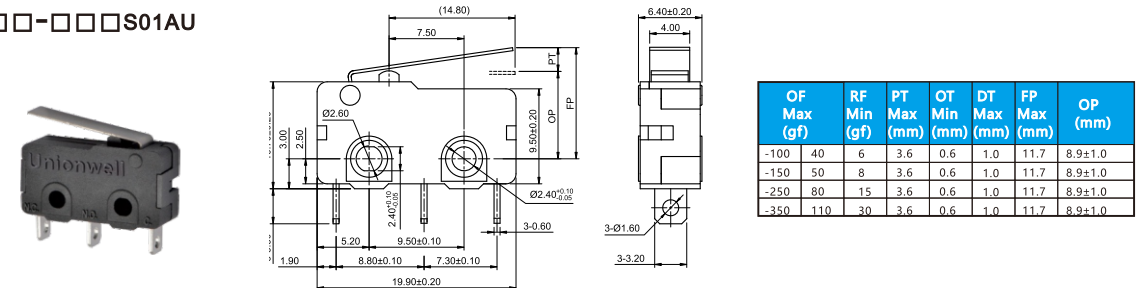
### ◆G6□□-□□□S00AU



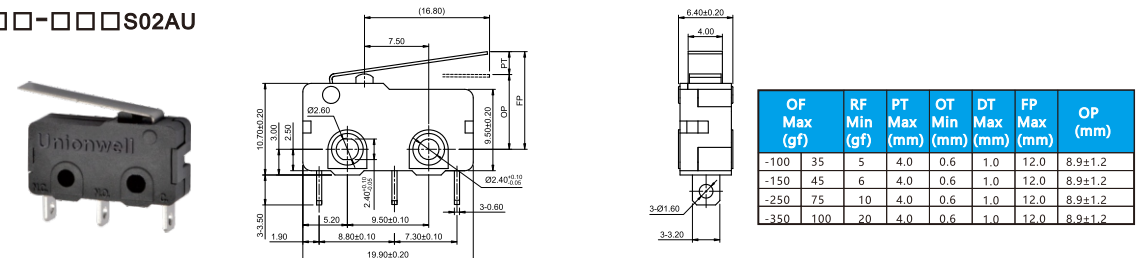
### ◆G6□□-□□□S00A-B3U



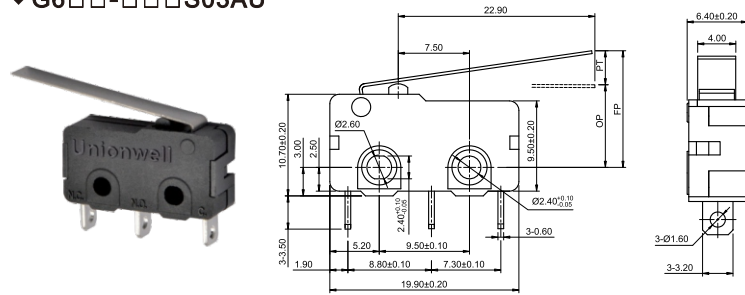
### ◆G6□□-□□□S01AU



### ◆G6□□-□□□S02AU

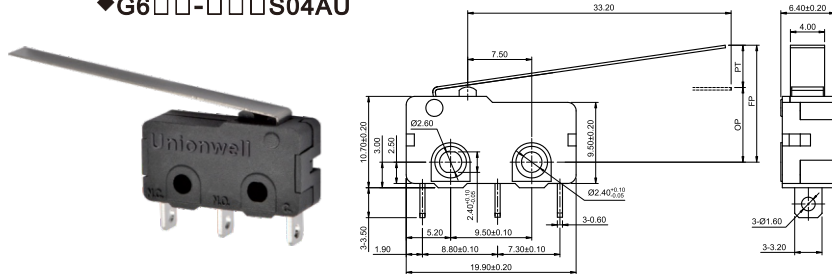


## ◆G6□□-□□□S03AU



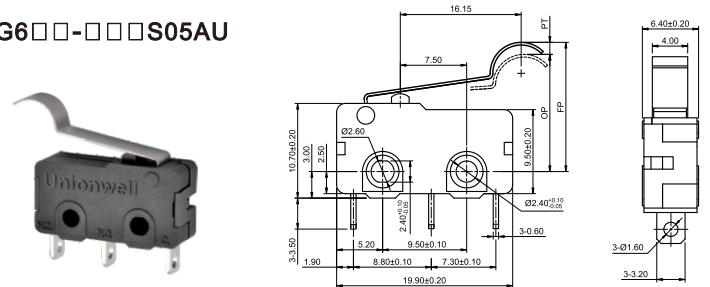
	OF Max (gf)	RF Min (gf)	PT Max (mm)	OT Min (mm)	DT Max (mm)	FP Max (mm)	OP (mm)
-100	25	2	6.1	0.8	1.8	13.5	8.9±1.8
-150	35	6	6.1	0.8	1.8	13.5	8.9±1.8
-250	55	10	6.1	0.8	1.8	13.5	8.9±1.8
-350	75	15	6.1	0.8	1.8	13.5	8.9±1.8

## ◆G6□□-□□□S04AU



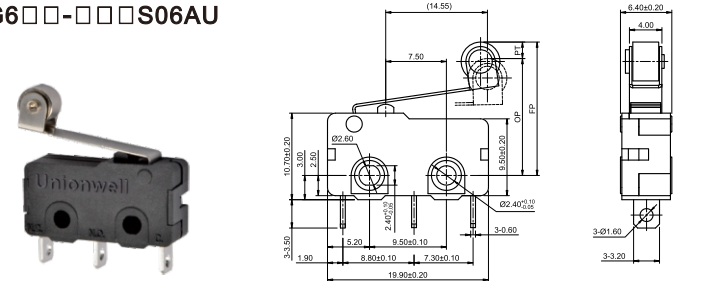
	OF Max (gf)	RF Min (gf)	PT Max (mm)	OT Min (mm)	DT Max (mm)	FP Max (mm)	OP (mm)
-100	15	2	7.5	1.5	2.0	15.5	8.9±2.0
-150	30	4	7.5	1.5	2.0	15.5	8.9±2.0
-250	45	7	7.5	1.5	2.0	15.5	8.9±2.0
-350	55	12	7.5	1.5	2.0	15.5	8.9±2.0

## ◆G6□□-□□□S05AU



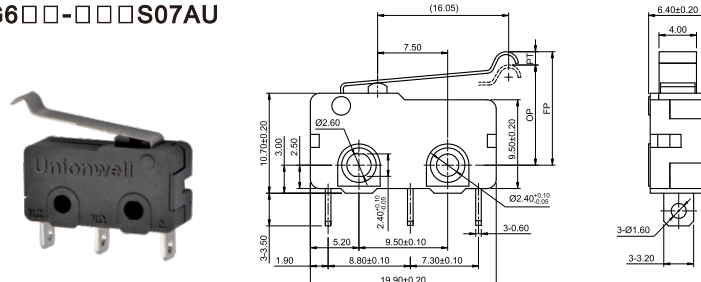
	OF Max (gf)	RF Min (gf)	PT Max (mm)	OT Min (mm)	DT Max (mm)	FP Max (mm)	OP (mm)
-100	35	5	5.0	0.6	1.0	18.5	11.90±1.50
-150	45	6	5.0	0.6	1.0	18.5	11.90±1.50
-250	75	10	5.0	0.6	1.0	18.5	11.90±1.50
-350	100	20	5.0	0.6	1.0	18.5	11.90±1.50

## ◆G6□□-□□□S06AU



	OF Max (gf)	RF Min (gf)	PT Max (mm)	OT Min (mm)	DT Max (mm)	FP Max (mm)	OP (mm)
-100	40	6	3.8	0.8	1.0	17.6	14.20±1.00
-150	50	8	3.8	0.8	1.0	17.6	14.20±1.00
-250	80	15	3.8	0.8	1.0	17.6	14.20±1.00
-350	110	30	3.8	0.8	1.0	17.6	14.20±1.00

## ◆G6□□-□□□S07AU



	OF Max (gf)	RF Min (gf)	PT Max (mm)	OT Min (mm)	DT Max (mm)	FP Max (mm)	OP (mm)
-100	40	6	4.5	0.8	1.0	14.4	10.40±1.20
-150	50	8	4.5	0.8	1.0	14.4	10.40±1.20
-250	80	15	4.5	0.8	1.0	14.4	10.40±1.20
-350	110	20	4.5	0.8	1.0	14.4	10.40±1.20