

G9A/G9B Subminiature Micro Switch



3.5mm Travel Micro Switch

■ Features

- G9A dust and water proof (IP67) / G9B dust proof (IP40)
- Small compact size
- Long life and high reliability
- Variety of terminals
- Variety of levers optional
- Long over-travel of 2.20mm minimum
- Widely used in auto control, home appliances and other industry control

■ Application

- ◆ Auto electronics
- ◆ Home appliances
- ◆ Apparatus and instruments

■ Parameters:

Rating	P1	0.1A 125/250VAC, 0.1A 30VDC
	05	5(2)A 125/250VAC, 5A 30VDC
Operating Frequency	Electrical	10~30 cycles/min
	Mechanical	120 cycles/min
Contact Resistance (Initiative)	With terminals type	≤100mΩ
	With wire type	≤200mΩ (500mm wires length)
Insulation Resistance (at 500VDC)		≥100MΩ
Voltage Resistance	Between terminals	AC 500V, 50/60Hz, 1min
	Between terminals and uncharged metal parts	AC 1,000V, 50/60Hz, 1min
Service Life	Electrical	50,000 cycles
	Mechanical	200,000 cycles (IP67) 200,000 cycles (IP40)
Operating Temperature		-40~+85°C
Operating Humidity		95% RH Max.

G9A/G9B Series Micro Switch Ordering Instruction

U	LOGO	Unionwell	Other
T001	Custom Code	General	Customized according to requirements to the code format is T+ serial number XXX for example: T001
300	Wires Length (AWG Number UL1007/AWG Type 20#)	500mm length standard lead wires	300 300mm length ... Other
F	Waterproof Code	Low pressure injection molding (only apply to wired switches)	Sealed housing with glue injection (only apply to wired switches) ... Other
A	Circuitry	A SPDT	B SPST-NC C SPST-NO
01	Lever Type	No Lever Pin Plunger	01 Lever ... Other
S	Terminal Type	S Solder terminals	P Straight PCB terminals E Molded lead wires downwards F Molded lead Wires lead to right Side (Opposite to pin plunger side) G Molded lead wires lead to left side (Pin plunger side) ... Special Terminals
200	Max Operating Force at Pin Plunger	200 200gf Max	... Other
05	Electrical Rating	ENEC/CQC: 0.1A 125/250VAC 30VDC P1 40T85 μ 5E4 UL/CUL: 0.1A 125/250VAC 30VDC	ENEC/CQC: 5(2)A 125/250VAC 30VDC 05 40T85 μ 5E4 UL/CUL: 5A 125/250VAC 30VDC ... Other
G9A	Switch Type	G9A IP67 G9B IP40 Series - Micro Switch	

Terminal Type

Terminal Thickness: 0.5mm

P# PCB Terminals	S# Solder Terminals
F# Wires Lead to Right	G# Wires Lead to Left
E# Wires Lead to Bottom	

Mounting Hole and Operating Characteristics

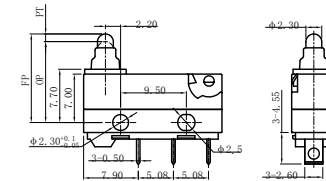
Mounting Hole Dimension	Mounting Hole Dimension of PCB Terminals

Circuitry

	SPDT	SPST-NC	SPST-NO

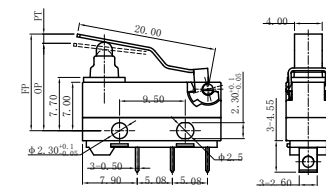
Dimensions and Operating Characteristics

G9A□□-□□□S00AU



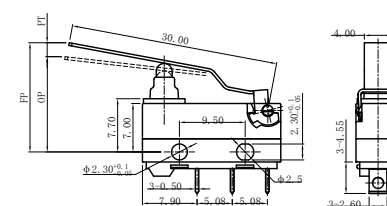
OF Max. (gf)	RF Min. (gf)	PT Max. (mm)	OT Min. (mm)	DT Max. (mm)	FP Max. (mm)	OP (mm)
-200	200	20	1.7	2.2	0.9	13.0
						11.7 ± 0.4

G9A□□-□□□S01AU



OF Max. (gf)	RF Min. (gf)	PT Max. (mm)	OT Min. (mm)	DT Max. (mm)	FP Max. (mm)	OP (mm)
-200	200	20	2.9	2.2	1.0	14.5
						12.6 ± 0.8

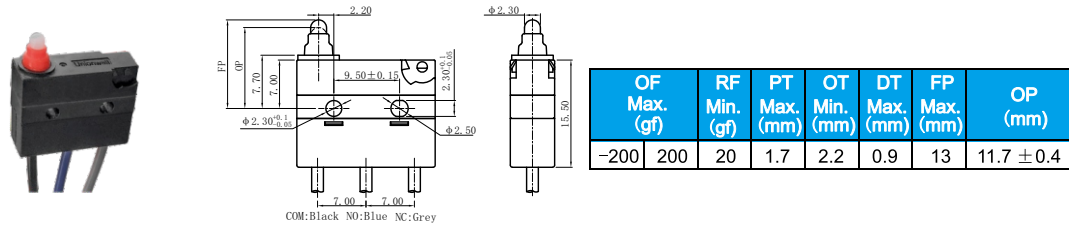
G9A□□-□□□S02AU



OF Max. (gf)	RF Min. (gf)	PT Max. (mm)	OT Min. (mm)	DT Max. (mm)	FP Max. (mm)	OP (mm)
-200	150	20	4.0	2.9	1.3	16.5
						13.5 ± 1.0

■ Dimensions and Operating Characteristics

◆ G9A□□-□□□E00AU



◆ G9B□□-□□□S00AU

