

G309 Series

Subminiature Micro Switch



■ Features

- IP67 Waterproof and dustproof design
- Small compact size
- Long life and high reliability
- Variety of levers
- Wide range of wiring terminals
- Widely used in automotive electronics, appliance and industrial control, etc.
- Multiple shape and size options for different fixation requirements.
- Contact structure

■ Application

- ◆ Car
- ◆ Air-conditioner
- ◆ Communication
- ◆ Electric Toothbrush
- ◆ Toys

■ Parameters

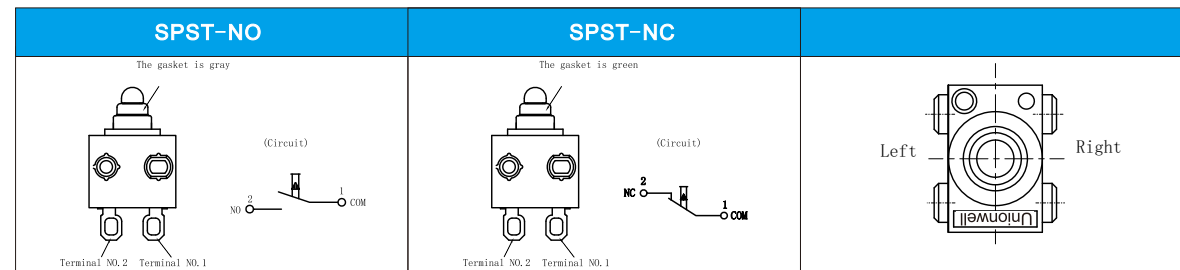
Operating		1~500mm/s
Operating Frequency		120 cycles/min
Insulation Resistance		≥ 100MΩ (at 500VDC)
Contact Resistance (Initial Value)	With Terminals Type	≤ 100mΩ
	With Wire Type	≤ 500mΩ (Standard wire length 300mm)
Voltage Resistance	Between Terminals	AC500V, 50/60Hz, 1min.
	Between Terminals and Uncharged Metal Parts	AC1,000V, 50/60Hz, 1min.
Vibration Resistance	No Transformation Action	10-55Hz Double amplitude 1.5mm
Service Life	Electrical	300,000 cycles (20 cycles/min) DC12V 0.1A DC3V 50μA
	Mechanical	300,000 cycles (30 cycles/min)
Protection Level		IEC IP67 (Exclude terminals)
Operating Temperature		-40~+85°C 60%RH (No ice, no frost)
Operating Humidity		95%RH (+5~+35°C)

G309 Series Micro Switch Ordering Instruction

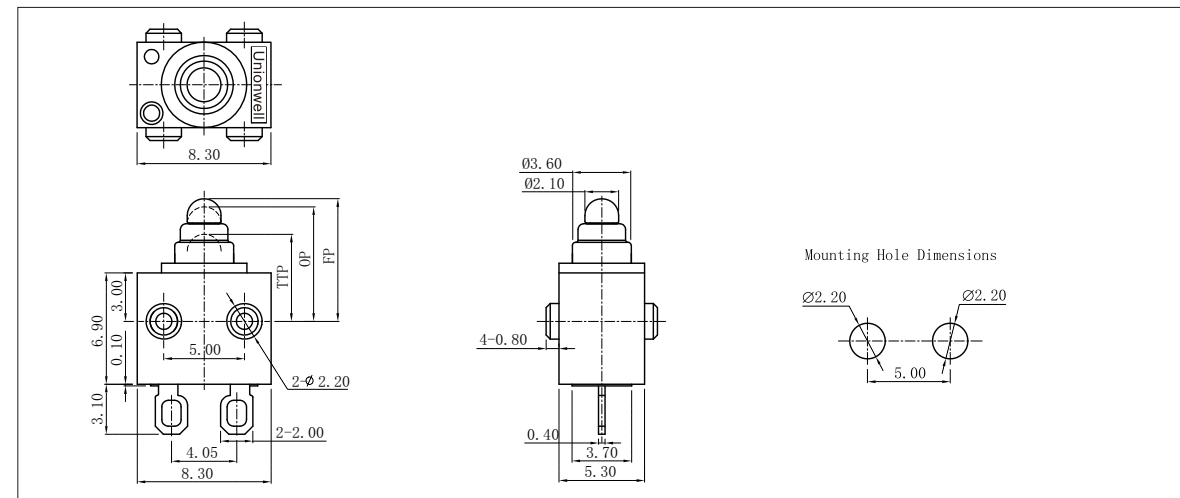
G309	150	P	00	E	39	G	A	280	B	U
Switch Type	Operating Force at plh Plunger/Max	Terminal Style	Lever Type	Circuitry	Shape and Posts	Posts Dimension	AWG Type (For Wire Type Only)	Wires Length	Wire Type	Custom code
G309 Series-Micro Switch	80 (80gf Max)	M Short Solder Terminals 6# 7# V Solder Terminals With to Pins G Type 6# 7# P Straight PCB Terminals G Type S Short Solder Terminals With Hole G Type	00 No lever Pin Plunger ... Other	E Slide Type SPST-NO ... Other	39 G Type No Posts 40 G Type Left Posts 41 G Type Right Posts 42 G Type Two Sides Posts 44 G Type Revers Left Posts ... Other	F Type Standard posts:2.60mmx5.0mm G φ2.6X1.5mm posts. H φ2.6X2.0mm posts. I φ2.2X0.8mm posts. K 7.3X1.2X1.2mm posts ... Other	No Molded Lead Wires F 22# G 24# ... Other	300mm Length Standard Lead 300 Wires 280 280mm length ... Other	B Molded Lead Wires on Left Side C Molded Lead Wires on Right Side E Molded Lead Wires on Bottom ... Other	T001 General Customized according to requirements the code format is T+XXX for serial number example: T001 ... Other
LOGO										U Unionwell ... Other

■ Circuit

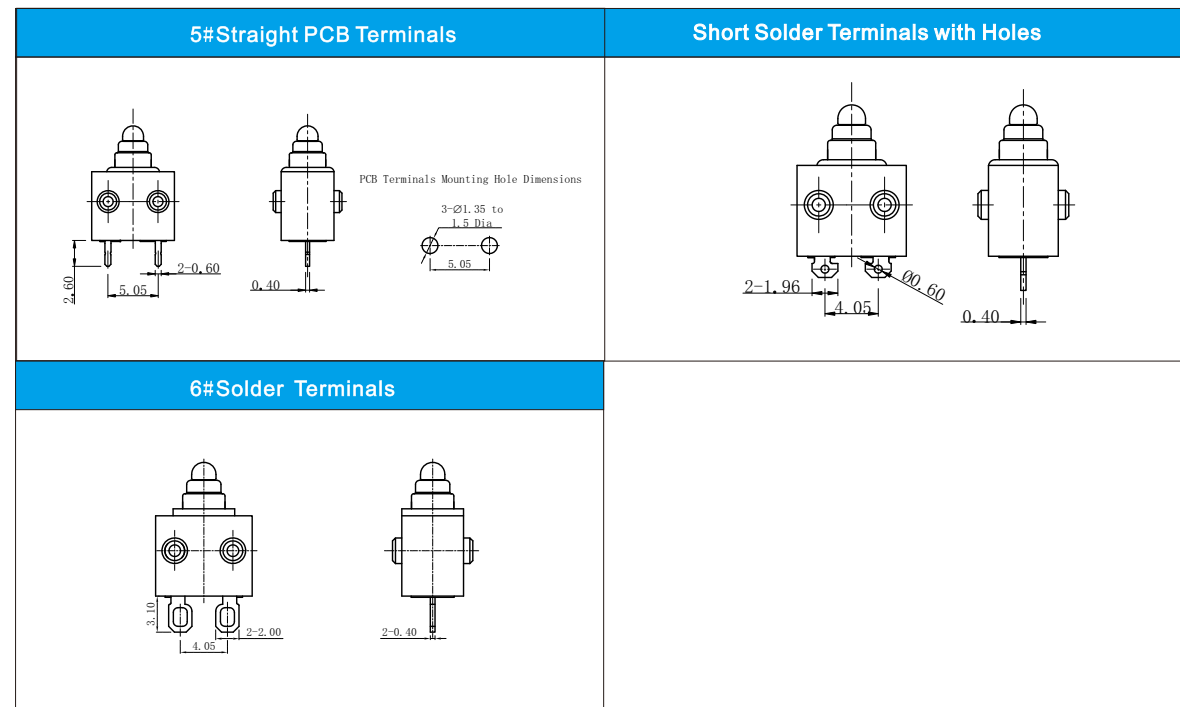
■ Post Direction Define



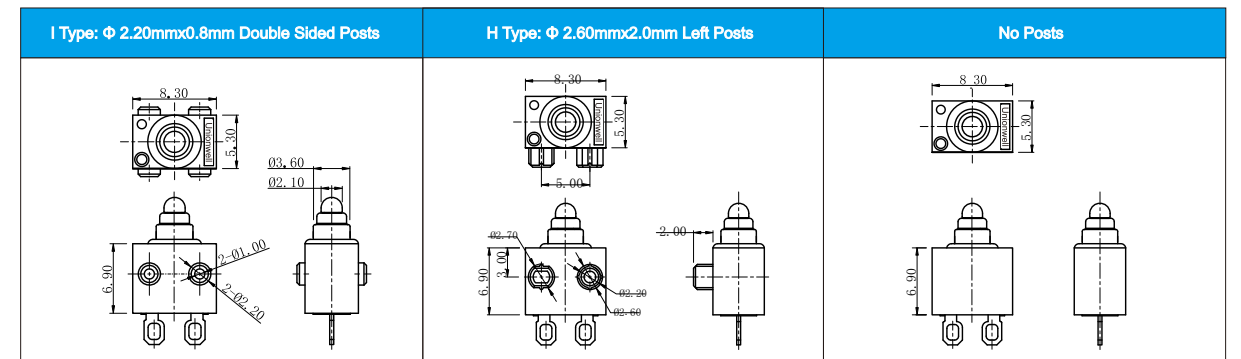
■ Basic Mounting Dimensions and Operating Characteristics



■ Switch Terminal Type(Can be customized)

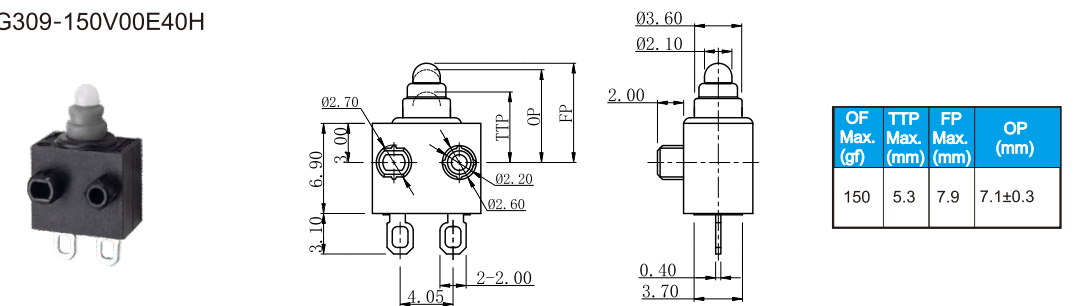


■ Posts Type and Dimension

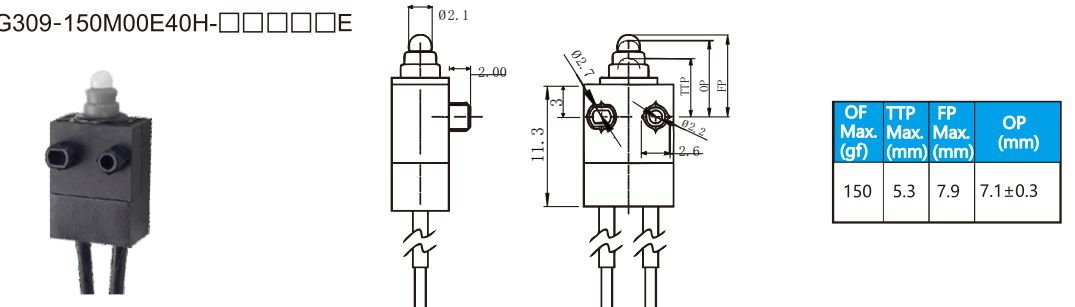


■ Dimensions and Operating Characteristics

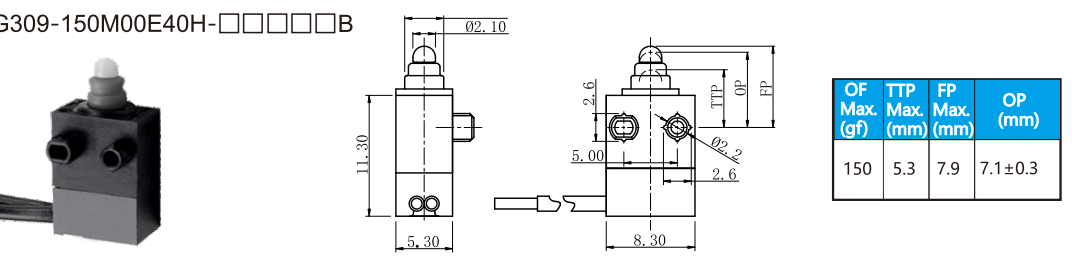
◆ G309-150V00E40H



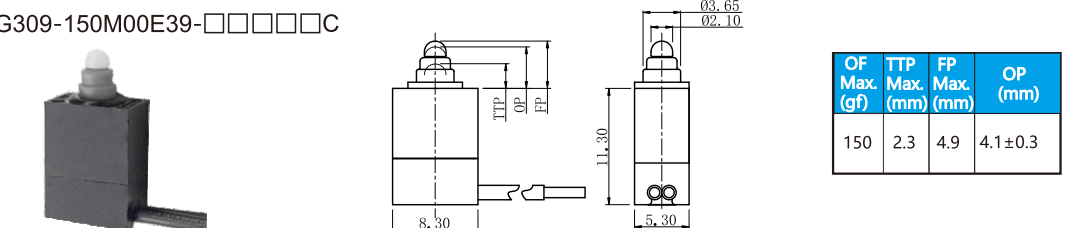
◆ G309-150M00E40H-□□□□□E



◆ G309-150M00E40H-□□□□□B

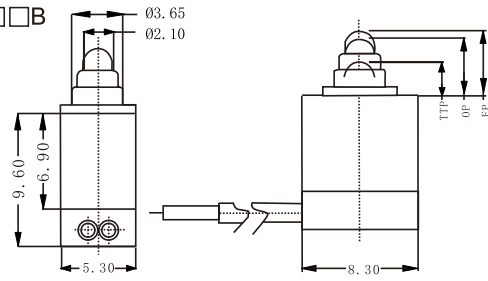


◆ G309-150M00E39-□□□□□C



■ Dimensions and Operating Characteristics

◆ G309-150M00E39-□□□□□B



OF Max. (gf)	TTP Max. (mm)	FP Max. (mm)	OP (mm)
150	2.3	4.9	4.1±0.3