

G10A Series

Subminiature Micro Switch (Spring-Loaded Structure)



■ Features

- Small compact size
- Long life and high reliability
- Variety of terminals
- Variety of levers optional
- Widely used in home appliances and industry control

■ Application

- ◆ Mouse
- ◆ Electric Knife
- ◆ Electric Stapler
- ◆ Telephone
- ◆ Calculator
- ◆ Mixer & Chopper
- ◆ Battery Charger
- ◆ Cordless Phone
- ◆ Alarm
- ◆ Cleaner
- ◆ Home Appliances

■ Operating Parameters

Rating	P1	0.1A 125/250VAC 30VDC
	03	3A 125/250VAC 30VDC
Operating Frequency	Electrical	10~30 cycles/min
	Mechanical	120 cycles/min
Contact Resistance (Initial Value)		100mΩ Max.
Insulation Resistance (at 500 VDC)		100MΩ Min.
Dielectric Strength	Between terminals	600VAC 50~60Hz for 1 Min.
	Between terminals and housing	1,000VAC 50~60Hz for 1 Min.
Operating Temperature		-40°C~+85°C
Operating Humidity		85% RH Max.
Service Life	Electrical	10,000 cycles
	Mechanical	1,000,000 cycles

G10A Series Micro Switch Ordering Instruction

G10A	Switch Type	Switch Type	
03	Electrical Rating	ENEC/CQC: 0.1A 125/250VAC 40T85 μ 1E4 UL/cUL: 0.1A 30VDC 40T85 μ 1E4	ENEC/CQC: 3A 125/250VAC 40T85 μ 1E4 UL/cUL: 3A 30VDC 40T85 μ 1E4
150	Max Operating Force at Pin Plunger	90 90gf Max.	150 150gf Max.
S	Terminal Type	S Standard Solder Terminals	P Standard Straight PCB Terminals
		Q Snap-in PCB Terminals	M Short Solder Terminals
		R Right Angled PCB Terminals	L Left Angled PCB Terminals
		K Long Solder Terminals	Special Terminals
		...	
01	Lever Type	00 No Lever Pin Plunger	01 10.55mm Short straight lever
		02 13.55mm Standard straight lever	03 18.00mm Long straight lever
		05 11.80mm Simulated roller lever	07 14.90mm Small simulated roller lever
		09 30.00mm Long straight lever	10 12.80mm Roller lever
A	Circuitry	A SPDT	B SPST-NC
		C SPST-NO	
T001	Custom Code	General	Customized according to requirements. The code format is T+serial number XXX, for example: T001
		...	Other
U	LOGO	Unionwell	Other
		U	...

Terminal Type

◆ Terminal thickness: 0.4mm

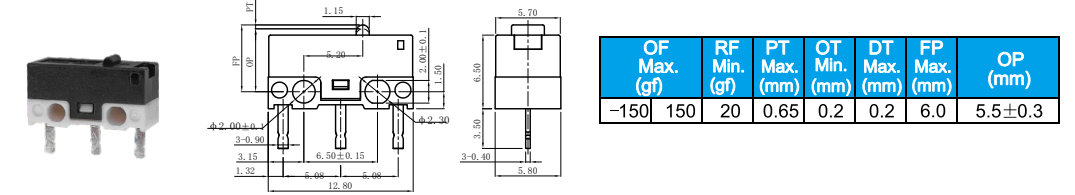
S Type Straight Solder Terminals	P Type Straight PCB Terminals	Q Type PCB snap-in (clip) Terminals
M Type Short Solder Terminals	R Type Right Angled PCB Terminals	L Type Left Angled PCB Terminals
K Type Long Solder Terminals	■ Circuit Configuration	

Mounting Hole Dimension

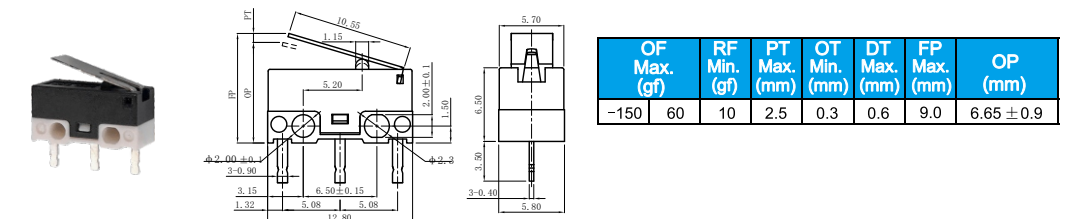
Mounting Hole Dimension	Mounting Hole Dimension of PCB Terminals
Mounting Hole Dimension of Right Angled PCB Terminals	Mounting Hole Dimension of Left Angled PCB Terminals

Overall Dimensions and Operating Characteristics

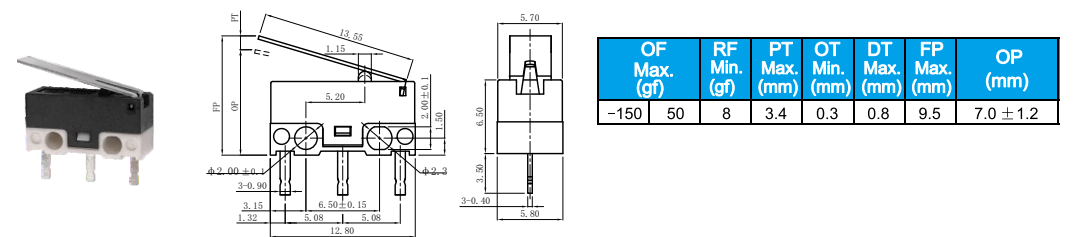
◆G10A□□-□P00AU



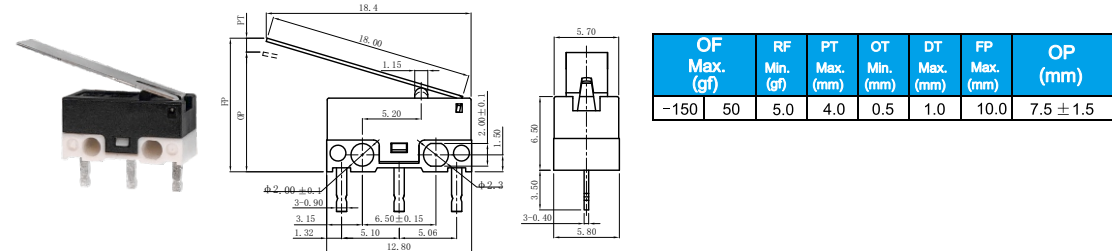
◆G10A□□-□P01AU



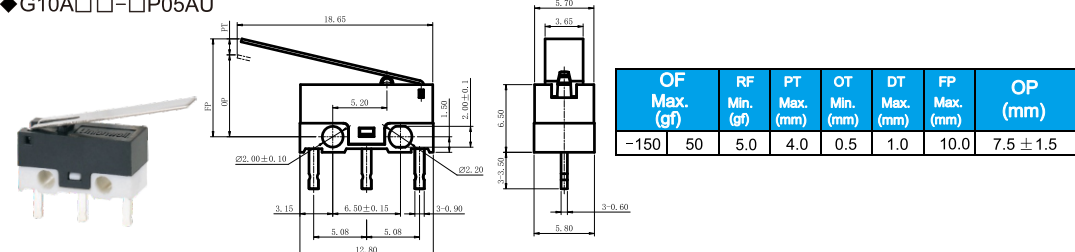
◆G10A□□-□P02AU



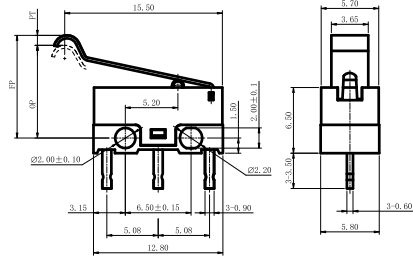
◆G10A□□-□P03AU



◆G10A□□-□P05AU

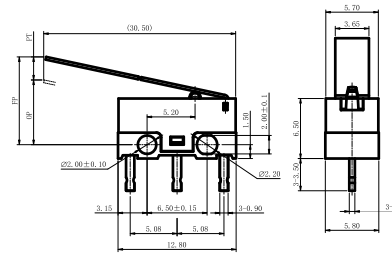


◆G10A□□-□P07AU



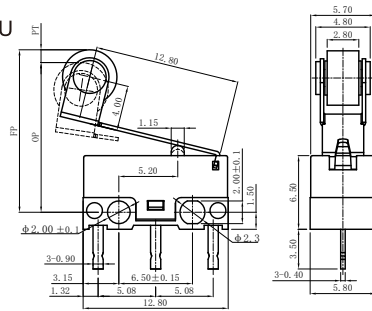
OF Max. (gf)	RF Min. (gf)	PT Max. (mm)	OT Min. (mm)	DT Max. (mm)	FP Max. (mm)	OP (mm)
-150	50	8	3.5	0.3	1.1	11.5
						8.2±1.0

◆G10A□□-□P09AU



OF Max. (gf)	RF Min. (gf)	PT Max. (mm)	OT Min. (mm)	DT Max. (mm)	FP Max. (mm)	OP (mm)
-150	23	3	6.9	0.4	2.5	14.0
						8.2±2.1

◆G10A□□-□P10AU



OF Max. (gf)	RF Min. (gf)	PT Max. (mm)	OT Min. (mm)	DT Max. (mm)	FP Max. (mm)	OP (mm)
-150	50	6	5.5	0.3	0.8	16.5
						13.0±1.5