

## G304B Series

### Subminiature Micro Switch



#### ■ Features

- High reliability and good resistance to environment, sealed micro switch with long travel
- With long travel,can work easily even without lever
- High reliability sliding contact structure
- With high temperature resistance(+85 °C)and drip-proof structure, can be widely applied in different environment, IP67 rated (except for terminals)
- Widely applied for home appliances,electronic equipment, automatic equipment,communication equipment,auto electronics,apparatus and instruments,electrical tools etc.

#### ■ Application

- Home Appliances
- Electronic Equipment
- Automatic Equipment
- Communication Equipment
- Auto Electronics
- Apparatus and Instruments
- Power Tools

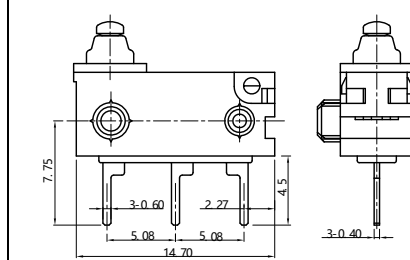
#### ■ Parameters:

Operation Speed		1 ~ 500mm/s (Related to the driving method)
Operation Frequency		120 cycles/min.
Insulation Resistance		≥100MΩ
Contact Resistance (Initial Value)	With terminals type	≤100mΩ
	With wire type	≤200mΩ (Standard wire length 300mm)
Voltage Resistance	Between terminals	AC600V, 50/60Hz, 1min.
	Between each terminal and the non-electrical metal parts	AC1,500V, 50/60Hz, 1min.
Operating Life	Electrical	300,000 cycles (15 cycles/min.) 0.1A 12VDC 50μA 5VDC
	Mechanical	300,000 cycles (30 cycles/min.)
Operating Temperature		-40~+85°C
Operating Humidity		85%RH Max.

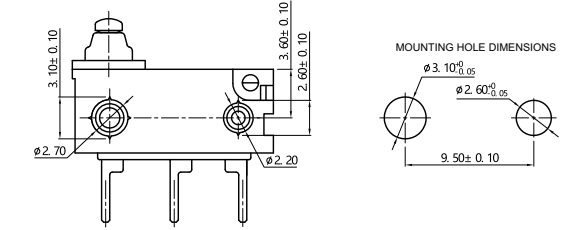
G304B	Switch Type	G304B Series Micro Switch Ordering Instruction	
150	Max Operating Force at Pin Plunger	150 150gf Max.	Other
P	Terminal Type	Straight PCB Terminals	Other
00	Lever Type	No Lever Pin Plunger	Leaf Lever
C	Circuit Code	SPDT	SPST-NC
2	Assembly Type	No Posts	Posts at Left Side
T001	Custom Code	General	Other
U	LOGO	Unionwell	Other

## Terminals Type

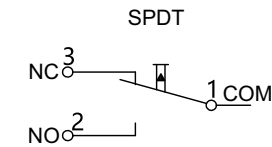
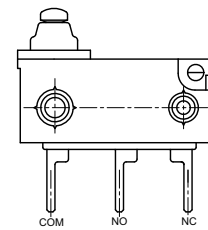
### ◆ Straight PCB terminal



## Basic Mounting Dimensions and Operating Characteristics

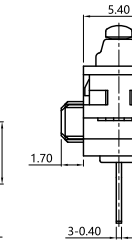
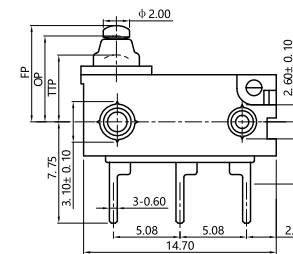


## Circuit



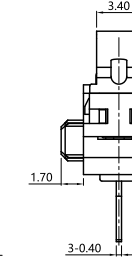
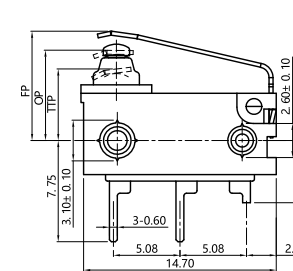
## Dimensions and Operating Characteristics

### ◆ G304B-150P00A2U



OF Max. (gf)	FP Max. (mm)	OP1 (mm)	OP2 (mm)	TTP Min (mm)
150	7.45	6.9±0.2	6.55±0.2	4.85

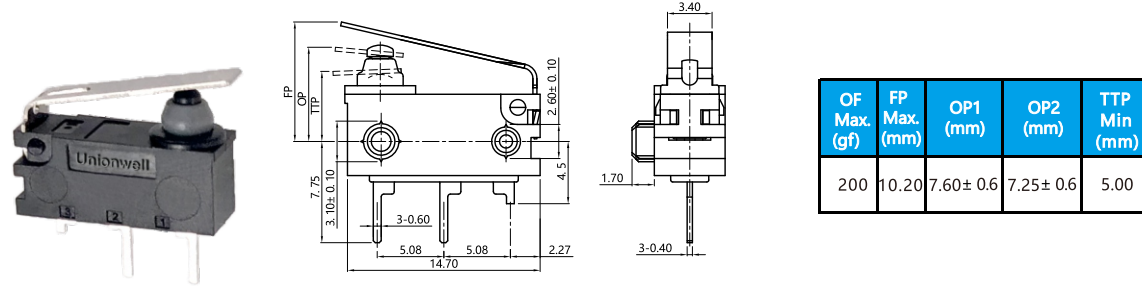
### ◆ G304B-150P01C2U



OF Max. (gf)	FP Max. (mm)	OP1 (mm)	OP2 (mm)	TTP Min (mm)
220	9.00	7.3±0.5	6.9±0.5	5.20

## ■ Dimensions and Operating Characteristics

### ◆ G304B-150P02C2U



### ◆ G304B-150P00C2U

