

G306 Series

Sealed Subminiature Micro Switch



■ Features

- High reliability and good resistance to environment, sealed micro switch with long travel
- With long travel, can work easily even without lever
- High reliability sliding contact structure
- With high temperature resistance (+85°C) and waterproof structure, can be widely applied in different environments, IP67 rated (except for terminals)
- Widely applied for home appliances, electronic equipment, automatic equipments, communication equipment, auto electronics, apparatus and instruments, power tools, etc.

■ Application

- ◆ Home Appliances
- ◆ Electronic Equipment
- ◆ Automatic Equipment
- ◆ Communication Equipment
- ◆ Auto Electronics
- ◆ Apparatus and Instruments

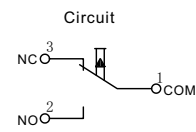
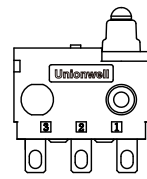
■ Parameters:

Operating Speed		1~500mm/s
Operating Frequency		120 cycles/min.
Insulation Resistance		≥100MΩ (at 500VDC)
Contact Resistance (Initiative)	With Terminals Type	≤100mΩ
	With Wire Type	≤500mΩ (Standard Wire Length 300mm)
Voltage Resistance	Between Terminals	AC500V, 50/60Hz, 1min.
	Between Terminals Uncharged Metal Parts	AC1,000V, 50/60Hz, 1min.
Vibration Resistance		No Transformation Action 10-55Hz (Double Amplitude 1.5mm)
Service Life	Electrical	300,000 cycles (20 cycles/min.) DC300V 0.1A DC14V 10mA
	Mechanical	300,000 cycles (30 cycles/min.)
Protection Level		IEC IP67 (Exclude Terminals)
Operating Temperature		< -40~ +85°C 60%RH
Operating Humidity		< 90%RH (+5~35°C)

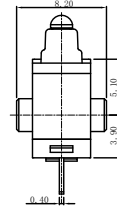
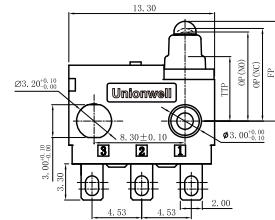
G306 Series Micro Switch Ordering Instruction

G306	150	S	00	A	A	300	T001	U
Switch Type	Max Operating Force at Pin Plunger	Terminal Type	Lever	Circuitry	Shape and Posts	Wires Length	Custom Code	LOGO
150	150gf Max	E With wire (wire leads to bottom)	00 No lever pin plunger	A SPDT Slide non-short circuit type, convert to 1, 2	A M3 Type	300 300mm length standard lead wires AVSS 0.3mm ² (black COM red NC blue NO) Except custom models	General	U Unionwell
...	Other	G With wire (left wire)	08 08# Lever	C SPST-NO	B No post	280 280mm length AVSS 0.3mm ² (Black COM Red NC Blue NO)	Customized according to requirements, the code format is T+serial number XXX, for example: T001	Other
		F With wire (right wire)	09 09# Lever	B SPST-NC	Other	No molded lead wires	Other	
		s Solder Terminals	41 41# Lever					
		P Straight PCB Terminals	Special lever			other length AVSS 0.3 mm ² (Black COM Red NC Blue NO)		
		... Special Terminals	...					

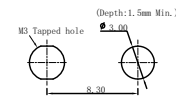
■ Circuit



■ Dimensions and Operating Characteristics of Basic Shape

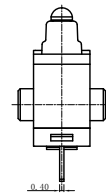
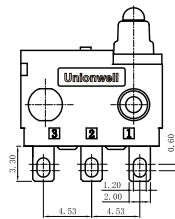


Mounting Hole Dimensions

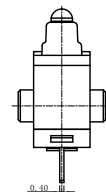
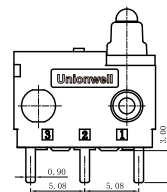


■ Terminals Type (can be customized)

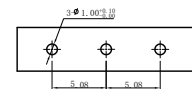
◆ (S) Solder Terminals



◆ (P) PCB Terminals

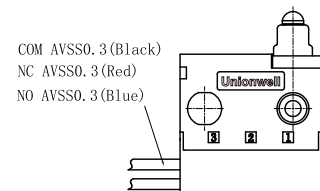


PCB Terminals Mounting Hole Dimensions

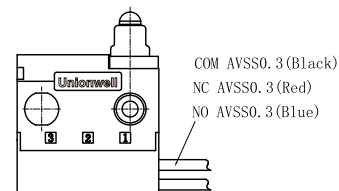


◆ Wire Lead Direction

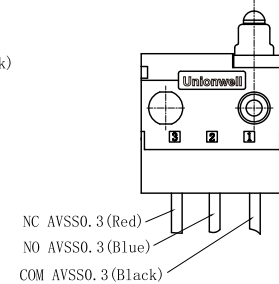
(G) Left Wire



(F) Right Wire

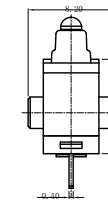
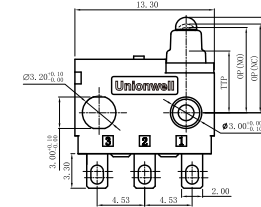


(E) Bottom Wire



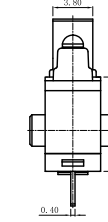
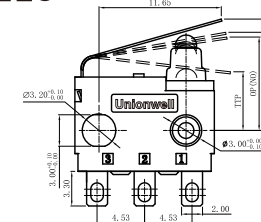
■ Switch Lever and Operating Characteristics

◆ G306-150S00□□U



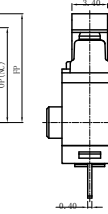
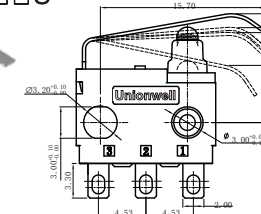
(OF)	150gf Max.
(FP)	9.2mm Max.
(OP-NC)	8.7 ± 0.3mm
(OP-NO)	8.4 ± 0.3mm
(OT-NC)	2.5mm Min.
(OT-NO)	2.2mm Min.
(TTP)	6.1mm Max.

◆ G306-150S08□□U



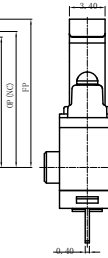
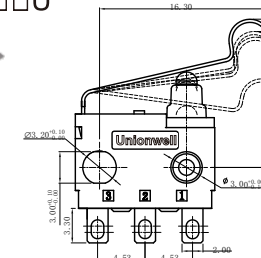
(OF)	150gf Max.
(FP)	11.5mm Max.
(OP-NC)	9.3 ± 0.6mm
(OP-NO)	8.8 ± 0.6mm
(OT-NC)	3.0mm Min.
(TTP)	6.2mm Max.

◆ G306-150S09□□U



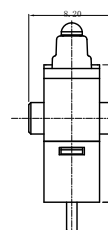
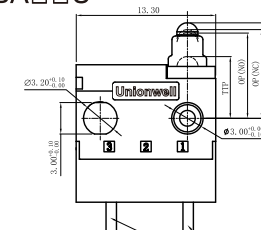
(OF)	170gf Max.
(FP)	11.3mm Max.
(OP-NC)	9.6 ± 0.6mm
(OP-NO)	9.1 ± 0.6mm
(OT-NC)	2.8mm Min.
(TTP)	6.2mm Max.

◆ G306-150S41□□U



(OF)	150gf Max.
(FP)	14.4mm Max.
(OP-NC)	13.0 ± 0.8mm
(OP-NO)	12.5 ± 0.8mm
(OT-NC)	3.5mm Min.
(TTP)	8.7mm Max.

◆ G306-150E00BA□□U



(OF)	150gf Max.
(FP)	9.2mm Max.
(OP)	8.4 ± 0.3mm
(OT)	2.2mm Min.
(TTP)	6.1mm Max.