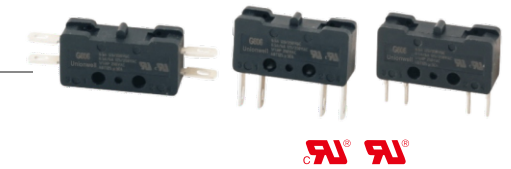


G606 Series

Double-Break Basic Micro Switch



■ Features

- ◆ Small size and compact structure
- ◆ Long life, high reliability
- ◆ Variety lever types
- ◆ DPDT double-break type
- ◆ Widely used in industrial control, etc.

■ Application

- ◆ Float
- ◆ Sewage pump

■ Parameters

Rating	06	0.5A 125/250VDC 0.5A/6A 125/250VAC, 1/4HP 250VAC
Operating Frequency	Electrical	10~30 cycles/min
	Mechanical	120 cycles/min
Contact Resistance(Initial Value)		30~100mΩ Max. (Depends on P/N)
Insulation Resistance		100MΩ Min. (at 500VDC)
Dielectric Strength		AC 750V RMS (50-60Hz)
Operating Temperature		-40°C~ +125°C
Operating Humidity		85%RH Max.
Service Life	Electrical	50,000~100,000 cycles (Depends on P/N)
	Mechanical	50,000 cycles
Unit Weight		1.96g (Solder terminals, without lever)

■ Circuit Configuration



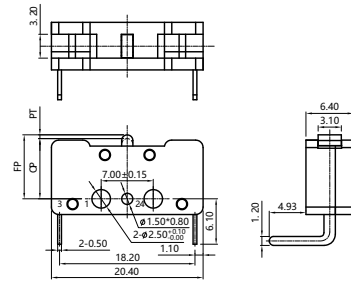
■ Mounting Hole Dimensions

Unit:mm

Mounting Hole Dimensions	Mounting Hole Dimension of PCB at Bottom	Mounting Hole Dimension of Lateral PCB Terminal

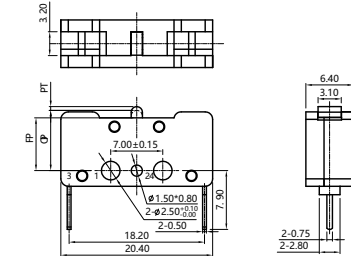
Dimensions and Operating Characteristics

◆G606-200L00EU



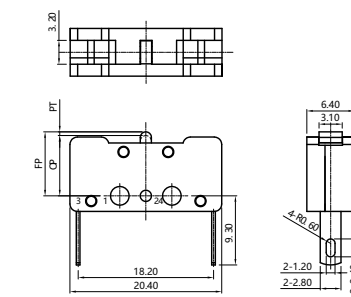
OF Max (gf)	RF Min (gf)	PT Max (mm)	OT Min (mm)	MD Max (mm)	FP Max (mm)	OP (mm)
200	40	1.5	0.25	0.45	9.5	7.7±0.3

◆G606-200P00EU



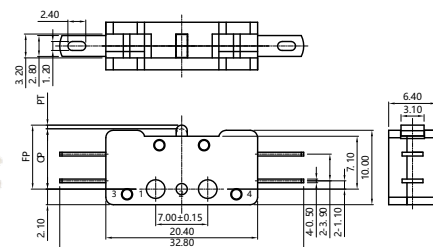
OF Max (gf)	RF Min (gf)	PT Max (mm)	OT Min (mm)	MD Max (mm)	FP Max (mm)	OP (mm)
200	40	1.5	0.25	0.45	9.5	7.7±0.3

◆G606-200K00EU



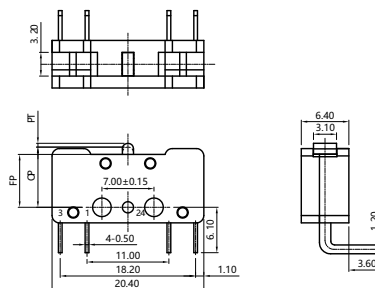
OF Max (gf)	RF Min (gf)	PT Max (mm)	OT Min (mm)	MD Max (mm)	FP Max (mm)	OP (mm)
200	40	1.5	0.25	0.45	9.5	7.7±0.3

◆G606-200F00DU



OF Max (gf)	RF Min (gf)	PT Max (mm)	OT Min (mm)	MD Max (mm)	FP Max (mm)	OP (mm)
200	40	1.5	0.25	0.45	9.5	7.7±0.3

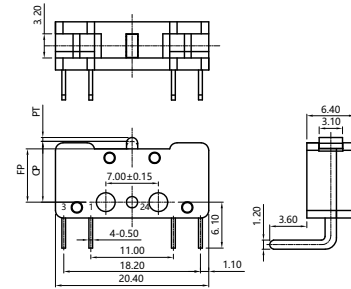
◆G606-200R00DU



OF Max (gf)	RF Min (gf)	PT Max (mm)	OT Min (mm)	MD Max (mm)	FP Max (mm)	OP (mm)
200	40	1.5	0.25	0.45	9.5	7.7±0.3

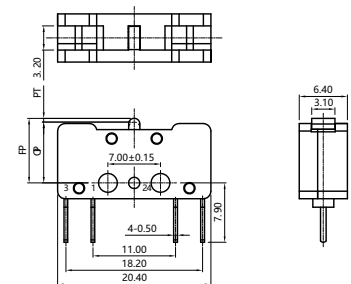
Dimensions and Operating Characteristics

◆G606-200L00DU



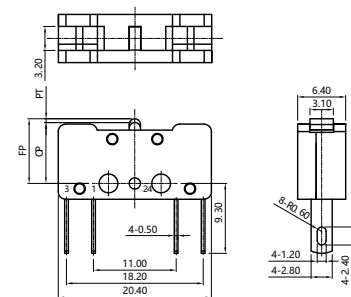
OF Max (gf)	RF Min (gf)	PT Max (mm)	OT Min (mm)	MD Max (mm)	FP Max (mm)	OP (mm)
200	40	1.5	0.25	0.45	9.5	7.7±0.3

◆G606-200P00DU



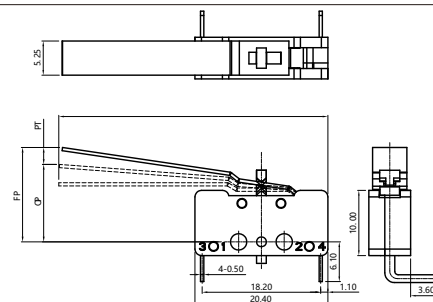
OF Max (gf)	RF Min (gf)	PT Max (mm)	OT Min (mm)	MD Max (mm)	FP Max (mm)	OP (mm)
200	40	1.5	0.25	0.45	9.5	7.7±0.3

◆G606-200K00DU



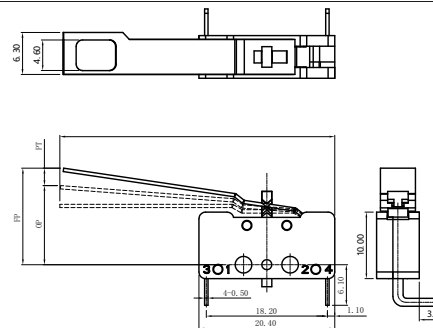
OF Max (gf)	RF Min (gf)	PT Max (mm)	OT Min (mm)	MD Max (mm)	FP Max (mm)	OP (mm)
200	40	1.5	0.25	0.45	9.5	7.7±0.3

◆G606-200R11EKU



Positive operating force	12gf MAX
Negative operating force	12gf MAX
Positive travel	8.0mm MAX
Negative travel	8.6mm MAX
Positive free position	19.0mm MAX
Negative free position	9.5mm MAX
Positive operating position	12.05±1.5mm
Negative operating position	15.5±1.0mm

◆G606-200R12EKU



Positive operating force	12gf MAX
Negative operating force	12gf MAX
Positive travel	8.0mm MAX
Negative travel	8.6mm MAX
Positive free position	19.0mm MAX
Negative free position	9.5mm MAX
Positive operating position	12.05±1.5mm
Negative operating position	15.5±1.0mm