



GT01 Series Detector Switch

Micro Switch Type, Could Be Used on PCB Board or Soldered with Wires.

■ Features

- Small size, light weight and high precision
- Long life, small operating force

■ Applications

- Widely used in automobile, motorcycles, remote control device, industrial machines, telecommunication equipment, navigation and car audio system, etc.

Terminal Type Unit: mm		
PCB Terminals 	Lead Terminals 	Lead Terminals (Screw Mounting)
PCB Board Mounting Hole Dimensions (Viewed From Direction A) 	Timing Lag Diagram <p>● Push Direction Only</p>	Circuit Diagram (Viewed From Direction A)

■ Parameters

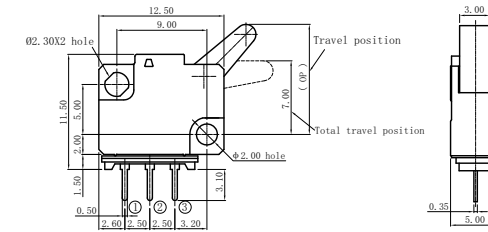
Electrical Characteristics	Rating	0.1A 12VDC/50µA 3VDC
	Contact Resistance (Initial Value)	100mΩ Max.
	Insulation Resistance	50MΩ Min.
	Voltage Proof	AC 50V (50-60Hz) 1 Min.
	Electrical Life	10,000 cycles/min
Mechanical/Reliability Characteristics	Operating Force	See Detailed Spec
	Mechanical Life	100,000 cycles (Min)
	Operating Temperature	-25 ~+80
	Operating Humidity	≤85% RH
	Solderability	245 ±5 3s±0.5s
Soldering Heat Resistance	260 ±5 3s±1s	

GT01 Series Detector Switch Ordering Instruction

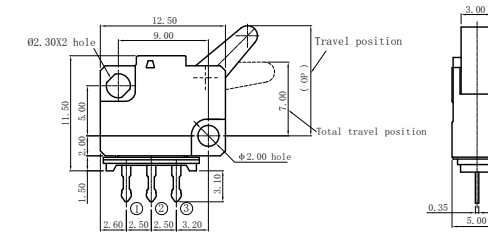
GT01	P	1	00	U
Switch Type	Code of Terminal Type	Code of Operating Force	Lever Type	LOGO
GT01 Series Detector Switch	P PCB Terminals	1 OF=70±30gf	00 Without Lever	U Unionwell
	L Lead Terminals	2 OF=150±40gf	01# 01# Lever	... Other
	S Lead Terminals (Screw Mounting)	... Other	02# 02# Lever	
	... Other		... Other	
Custom Code	General			
	Customized according to requirements, the code format is T+serial number XXX, for example: T001			
			T001	
			... Other	

■ Dimensions

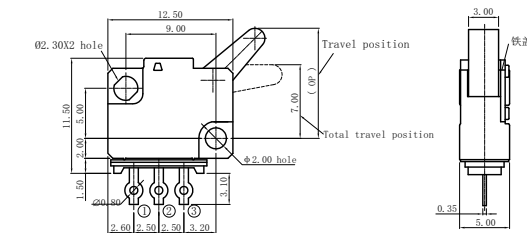
GT01P100U



GT01L100U



GT01S100U



Lever can be customized according to customer's demand

